

COMMUNITY WILDFIRE PROTECTION PLAN



Strelina



A Cooperative Agreement Grant provided funding through BLM, Glennallen Field Office to SOA, Valdez-Copper River Area Forestry & Fire Protection. We appreciate the opportunity this grant gave our office to create, develop and execute writing ten (10) Community Wildfire Protection Plans for the Copper River Basin. Partnerships like this help agencies plan, collaborate, and take action to make our communities safer and better prepared in the event of large-scale wildland fire.



The Valdez-Copper River Area Community Wildfire Protection Plans have been created and written by Emily Hjortstorp, CWPP Project Coordinator, and Jenny Moser, Wildland Fire Prevention Lead, along with help and input from the local community and 3rd party resources. Guidelines suggested in “Preparing a Community Wildfire Protection Plan — A Handbook for Wildland-Urban Interface Communities” that is posted on the State of Alaska [Website](#) were followed during the development of this plan. An [interactive website](#) and a local Valdez-Copper River Area Forestry & Fire Protection logo were also created through this grant funded project.

Table of Contents

Executive Summary	4
Background	6
Collaboration	7
Community Process	
CWPP Planning Area	
Community Profile	9
Location	
Population	
Critical Facilities	
Seasonal Factors	
Wildland Fire History	
Community Risk Assessment	11
Risk/Hazard Analysis of Available Fuels	
Community Risk Assessment	
▶ <i>Inside Community</i>	
▶ <i>Outside Community</i>	
▶ <i>Barriers</i>	
▶ <i>Fire Protection Resource Availability</i>	
▶ <i>Community Firewise Rating</i>	
▶ <i>Overall Community Rating</i>	
Action Plan	17
Areas to be Protected	
Prioritized Assessment Findings	
Tasks and Matrix of Mitigation Measures	
Summary, Review and Updating Process	21
Signature Page	22
Appendix A – Alaska Fire Management Planning Supplement	23
Appendix B – Assessment of Hazard, Barriers, and Defensible Space Rating Criteria	27
Appendix C – Fjördland Fire Solutions	32
C.1 Risk Assessment and Action Plan	
C.2 Fjördland Fire Maps	
Appendix D – Bureau of Land Management Glennallen Field Office Risk Assessments	32

Executive Summary

Wildland fire is a natural event in the boreal forest, which extends throughout much of Alaska, including the Copper River Basin. Being a fire-prone ecosystem, the effects of fire are needed to regenerate old forests, introduce nutrients to the soil, and create a mosaic pattern on the landscape of new-growth vegetation, which provides diversity and valuable animal habitat. While fires in the wildlands of Alaska can be beneficial, they are extremely destructive to our communities, infrastructure, areas of cultural significance and resource values. These areas must be protected from the threat of wildland fire. Thunderstorms and associated lightning strikes are a frequent cause for wildland fire concern during the summer. An even greater threat of wildland fire is posed by human-caused fires, often started in or around our communities, which cause more damage with less acres burned than lightning caused wildland fire in remote areas.

Proper planning and preparation can reduce the destructive effects of wildland fire. This Community Wildfire Protection Plan (CWPP) analyzes the risk of wildland fire to the Strelna community planning area and mitigation efforts to reduce future wildland fire hazards.

The community risk/hazardous fuels assessment confirms that the fuel accumulation and threat of danger from wildland fire to Strelna is very high. This rating is due to vegetative fuel types and configuration in and outside the community. Hazards that reside in the Strelna planning area consist of expanses of dry grass around previous cleared areas and homesites during pre-season green up, long response times for emergency resources with limited radio communications and a lack of subsurface water to fill fire engines year-round. Many homes do not have adequate defensible space and are surrounded by hazardous debris including inoperable vehicles, dilapidated trailers, and buildings.

Additionally, in the 1990s, the Kenai Peninsula and Copper River Basin experienced a spruce beetle (*Dendroctonus rufipennis*) outbreak that affected nearly 2.3 million acres by its peak in 1996, killing most large diameter spruce trees in many parts of these regions (Werner *et al.* 2006). The Copper River Basin saw large scale infestation from Alaska spruce beetle for many years during this outbreak, resulting in heavy fuel loading of standing and fallen beetle-killed spruce. The result of over a decade of this epidemic is heavy fuel loading of standing and fallen beetle killed spruce. Spruce beetle is a natural forest disturbance much like wildland fire, which can cause an increase in fuel loading and resistance to suppression efforts. These conditions set the stage for a catastrophic wildland fire event if efforts are not taken to reduce the risk.

Based on community input from the 2021/2022 survey results, top hazards Strelna residents identified include lack of clear road signage, inadequate communications and long response times for emergency responders, unsafe burning practices for both locals and tourists, homes need to be firewised, and need for equipment and training for the Volunteer Fire Department, and no subsurface water source, only surface water sources are available to fill equipment.

The community risk and wildland fire hazard ratings are used to create an action plan to reduce the risk of catastrophic wildland fire. The plan evaluates various risk elements, encompassing vegetation types prone to fueling fires, such as black and white spruce, mixed hardwood forests, grass and shrub lands. These fuels pose high flammability and can contribute to fires of intense magnitude. Additionally, within the community, there are added hazards like tall dry grass during pre-green up, debris, abandoned inoperable vehicles near residences, and challenges to emergency responders increasing the risk and hazards of wildland fire potential and emergency response. Beyond the community periphery, corresponding vegetative fuels extend wildland fire risk.

Though natural barriers such as lakes and bogs with sparse vegetation offer some defense, notable vulnerabilities persist, in all cardinal directions of this community to include high concentration and continuous fuels. Additionally, the local Volunteer Fire Department (VFD) encounters obstacles due to limited resources, training, and equipment. The Alaska Division of Forestry & Fire Protection (DOF) has prolonged response times of 120+ minutes by road and 50+ minutes by helicopter.

Background

The Community Wildfire Protection Plan (CWPP) is a collaborative effort created in response to the 2003 Healthy Forest Restoration Act (HFRA) which directs communities at risk for wildland fire to develop a risk assessment and mitigation plan. The Community Wildfire Protection Plan (CWPP) process assists communities in developing an appropriate and desired wildland fire protection plan to guide future mitigation efforts. Completion of this CWPP involved the following steps:

- Identify stakeholders, land management agencies, and interested parties
- Establish a community planning area
- Develop a community risk assessment
- Ongoing opportunities for community input through surveys, public meetings, and the creation of a dedicated website
- Address priorities through stakeholder meetings and public input
- Develop an action plan and task matrix
- Finalization of the plan with a total of three public community meetings throughout the process

Strelna's first Community Wildfire Protection Plan was accepted in December 2008. While the Community addressed many of the priorities in the action plan, not all items were addressed and the fuels work completed needs re-treatment. Additionally, some identified problems remain ongoing, such as removal of debris, trash and inoperable vehicles surrounding homesites to allow fuel reduction efforts to take place, road labeling and maintenance, and increased radio communications for all first responders. Creating a cost share program that can be implemented in the following years to assist homeowners with costs that they encounter to create defensible space around their homes is a goal outlined in the Action Plan. This type of program was developed for the Glennallen and McCarthy communities in 2009 and 2011. This was a highly successful program that resulted in many homeowners clearing trees and creating adequate defensible space around their residents.

The natural conditions surrounding Strelna remain equally concerning, with areas of beetle kill trees and fuel-loading of dead and down trees and large expanses of coniferous trees that pose a threat to the wildland urban interface when hot and dry weather conditions exist.

Refer to Appendix A for guidance on Alaska statewide interagency wildland fire management response and planning.

Collaboration

The Alaska Division of Forestry & Fire Protection (DOF) / Valdez-Copper River Area office partnered with members to help with the identification, assessment, and prioritization areas of greatest risk and vulnerability in the event of a wildland fire.

- Ahtna Inc.
- Bureau of Land Management (BLM)
- Bureau of Indian Affairs (BIA)
- Fjordland Fire Solutions LLC
- Local landowners, business owners and community members
- Strelna Volunteer Fire Department
- Valdez/Copper River Area Division of Forestry & Fire Protection (DNR)
- Wrangell - St. Elias National Park and Preserve

COMMUNITY PROCESS

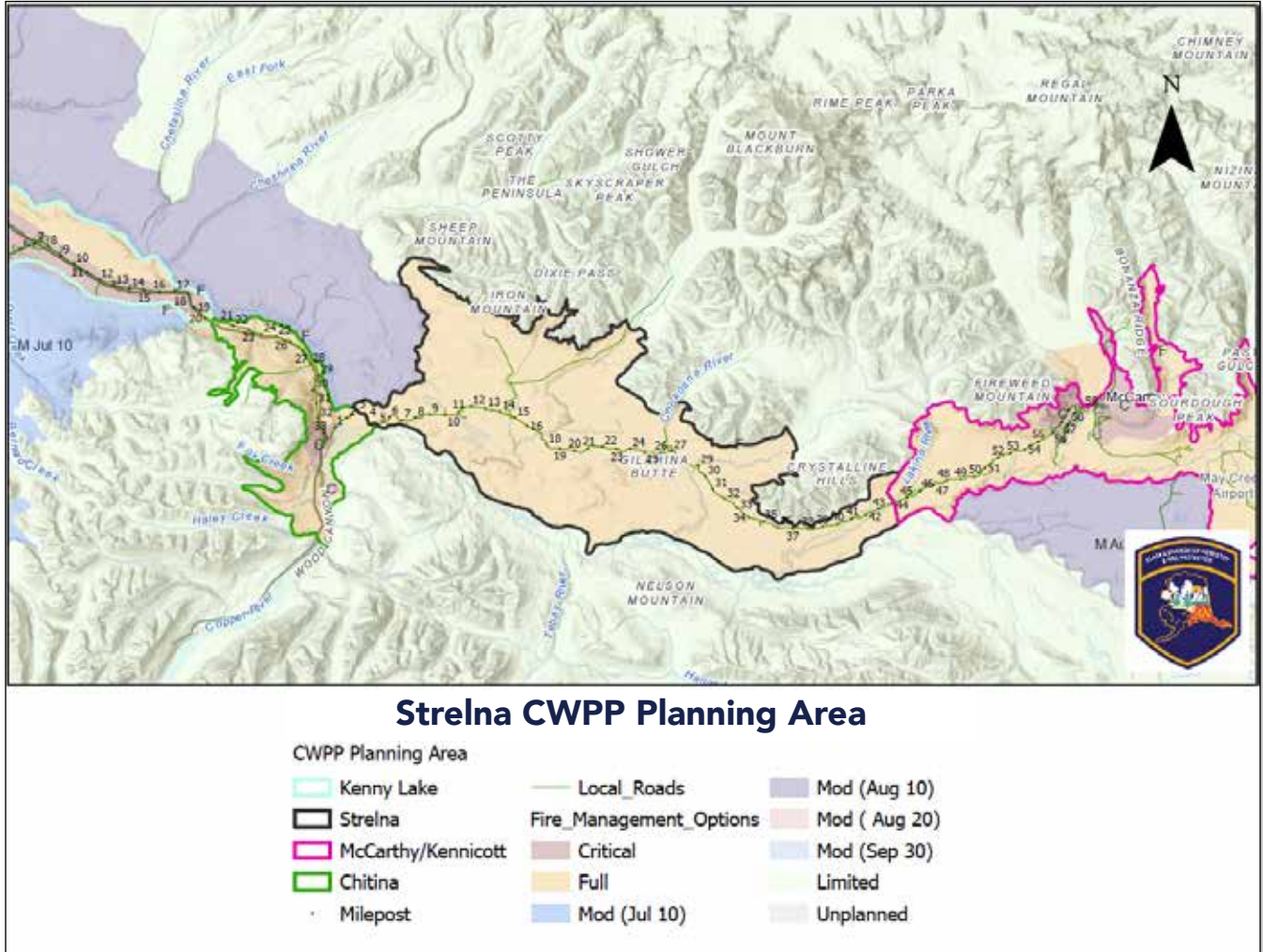
Community input was solicited by in-person visits to Strelna including both formal and informal meetings, presence at public events, online and mail delivered surveys, social media, and a collaborative website displaying the latest information. All ideas were collected and analyzed to determine the priority needs and actions included in this plan.

CWPP PLANNING AREA

A Wildland Urban Interface (WUI) Boundary is the line where human development meets and intermingles with undeveloped wildland and vegetative fuels. The Strelna (WUI) Boundary is designated to incorporate the surrounding Critical and Full-Fire-Management option, which includes all residents and infrastructure of the area as well as the surrounding lands that would cause a threat in the event of a wildland fire. A fire management option is a classification assigned by the jurisdictional agency that provides fire protection and determines the initial response to a wildland fire. The goal is to mitigate the potential of catastrophic wildland fire within this boundary by recognizing the hazards, prioritizing, and developing an action plan with clear goals and objectives.

Critical-Fire-Management option is defined by the State of Alaska and Alaska Fire Service as "The highest priority for suppression actions. Lands in wildland urban interface and other densely populated areas where there is an immediate threat to human life, primary residences, inhabited property, community-dependent infrastructure, and structural resources designated as National Historic Landmarks should be considered for the Critical Management Option. This classification is applicable to an entire village or town as well as a single inhabited structure."

Full-Fire-Management option is defined by the State of Alaska and Alaska Fire Service as “High priority but below Critical. Provides for protection of moderately populated areas, cultural and paleontological sites, developed recreational facilities, physical developments, administrative sites and cabins, structures, high-value natural resources, and other high-value areas.”



The Strelna Community Wildfire Protection Planning Area covers mile 3 to 44 of the McCarthy Road, paralleling the north bank of the Chitina River, in between the Wrangell and Chugach mountains. The communities of Strelna and Chokosna are encompassed in this area, as well as other sparsely spaced full and part time residents who live along the McCarthy Road corridor and remote homesites accessed by trails. There is no electric utility service, and all residents live in an off-grid manner with minimal road maintenance in the winter. This planning area includes the Kotsina, Kuskalana, Chokosna, and Gilahina River drainages, as well as the Nugget Creek and Copper Town trails which provide access to the foothills of the Wrangell Mountains in Wrangell - St. Elias National Park and Preserve. Land ownership in this area includes private, state, BLM, NPS, village and tribal corporation lands, native allotments, and lands managed by the University of Alaska. This area holds a rich history deeply embedded with cultural and historic mining sites.

Community Profile

Strelna is located on the north banks of the Copper River. Parts of this community lie outside and within the boundaries of the Wrangell - St. Elias National Park and Preserve, 81+ miles southeast of Glennallen. The community of Strelna was first reported by the U.S. Geological Survey in 1910. From 1912 to 1925 the Strelna Post Office was in operation. There is no local government and very few commercial amenities, however, there are privately owned mines located around the community.

The community of Strelna originated as a mining community and a rail station for the Copper River & Northwest Railway. There were several mines in the area. The Alaska Copper Corporation Mine, located 17 miles north of Strelna on Nugget Creek, produced gold as early as 1907. Other early mining companies in the area were the Chitina-Kuskalana Co. and the North Midas Co. By 1927, only the North Midas Co. was operating at minimal scale. After the Kennicott mines closed in 1938, support services moved to the Glennallen area. Strelna and Chitina became ghost towns overnight. Strelna was homesteaded in the mid 1960's, and a few descendants of the original homesteaders occupy the area now. Most full-time residents lead subsistence lifestyles to adjust for the lack of local employment opportunities.

During the summer, gardening, berry picking, herb gathering, and hunting are popular pursuits among locals. Winter activities include trapping, snow machining, and ice fishing. The natural resource values in Strelna consist of subsistence fishing, hunting, forest foraging, berry picking and personal use firewood timber harvesting.

LOCATION

The Community of Strelna is in the Copper River Basin in South Central Alaska. Their general geographic location is approximately 61.5114° north latitude -144.0689° west longitude, township 4 south, range 7 east, section 22, Copper River Principal Meridian.

Strelna is located 81+ road miles southeast of Glennallen, intermingling with the Wrangell-St. Elias National Park and Preserve. Rich Copper deposits were discovered at the turn of the century along drainages in the Copper River Basin, bringing a rush of prospectors and homesteaders to the area. The Copper River & Northwest Railway enabled Chitina and Strelna to develop into a thriving community by 1914. After the mines closed in 1938, support activities moved to the Glennallen area.

POPULATION

According to the 2020 census data Strelna's population is incorporated with the Chitina census area.

CRITICAL FACILITIES (INFRASTRUCTURE)

The VFD building at mile 11 on the McCarthy Road is the only community building in the Strelna Planning Area. Seasonally inhabited structures and businesses for the Strelna planning area consists of campgrounds, local guiding businesses and recreational cabins and a seasonally operated trading post.

Strelna has limited infrastructure. All roads in Strelna are gravel or dirt. The McCarthy Road is minimally maintained by DOT. Industry sources for the Strelna planning area include tourism and fishing, jobs supplied by local guiding and construction businesses. There is no transfer station or dump in this area.

SEASONAL FACTORS

Spring pre-green up grass poses wildland fire threat, commonly found around structures and previously cleared areas. Summer thunderstorms bring frequent lightning from mid-June to mid-August bringing the potential of lightning caused fires. During the summer, subsistence dip netting for salmon in the Copper River brings a large number of Alaskans from all over the state to the Copper River Basin. There is a huge influx of tourists traveling through the Strelna planning area going to McCarthy/Kennicott to explore the rich history of the Kennicott Copper Mine and the Wrangell - St. Elias National Park and Preserve, increasing the risk of wildland fire within the WUI.

WILDLAND FIRE HISTORY

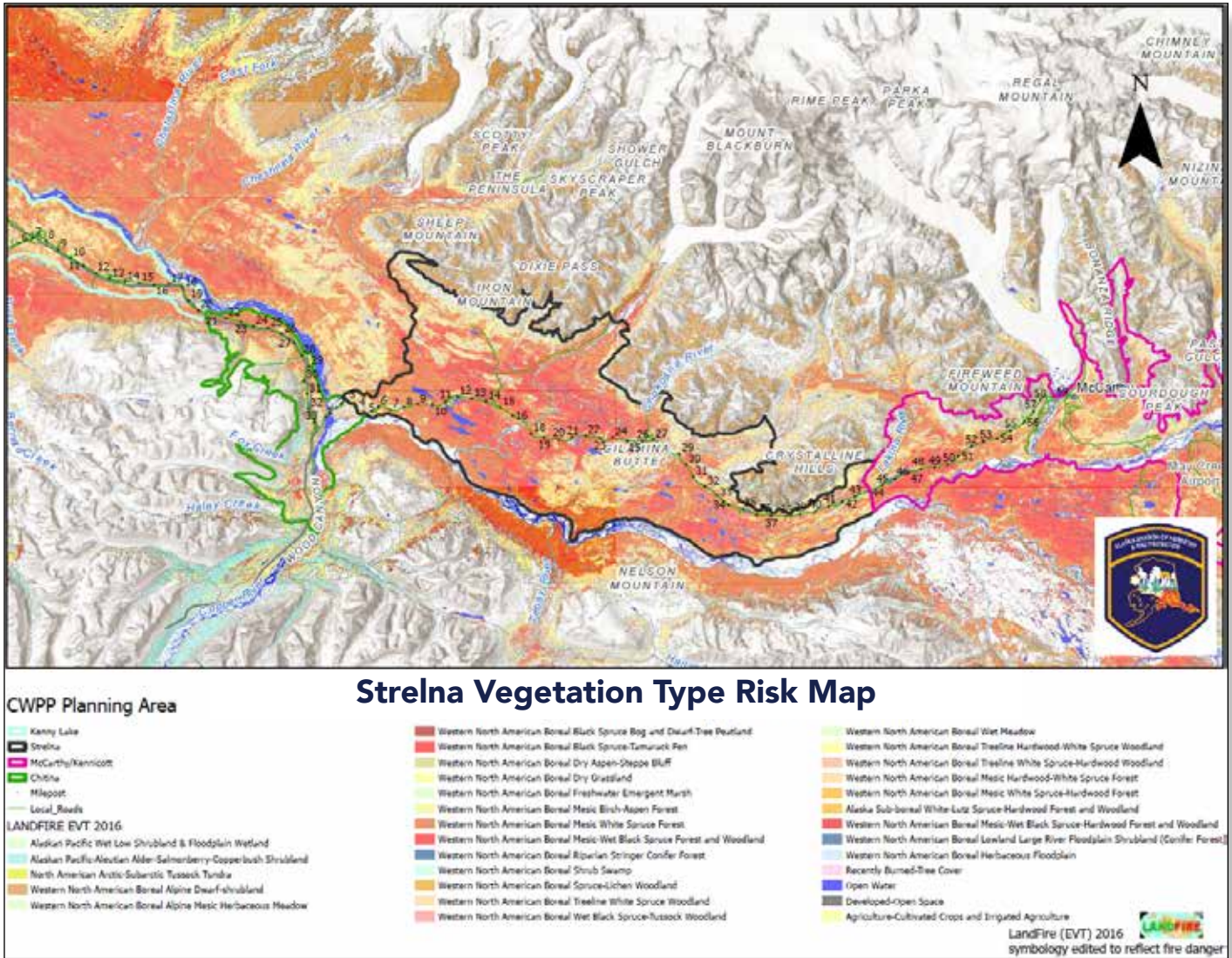
Large fire history in the surrounding area:



- **2016** lightning-caused Steamboat Creek reburned 39,300 acres in the 2009 Chakina Fire scar, east of the Chitina planning area.
- **2011** lightning-caused Gilahina Fire burned over 1,065 acres north of the Strelna planning area.
- **2009** lightning-caused Chakina Fire burned 57,000 acres in the McCarthy area, east of the Chitina planning area.
- **1948** Lackina River Fire burned over 14,069 acres, within the Strelna planning area.
- **From 1940 to the present**, numerous human-caused fires can be found in the Alaska Fire History Location database within Strelna’s CWPP Planning area. These, wildland urban interface (WUI), fires were smaller in size; however, if they were not contained while small, they could have led to a catastrophic outcome.



Community Risk Assessment



RISK/HAZARD ANALYSIS, AVAILABLE FUELS

The Copper River Basin is classified as Fire Regime Group IV, which means a Stand-Replacement-Severity fire is expected every 35-100+ years.

The image above shows vegetative fuels with the color corresponding to their flammability or fire danger in prime fire weather conditions. Fuels shown in shades of red constitute coniferous needle-bearing trees, primarily black or white spruce, which are highly flammable in high fire danger conditions. Orange tone vegetative fuels consist of a more mosaic mix of spruce and

hardwoods or more open canopy structure. While still highly flammable, these vegetative fuel types constitute less of a threat than a continuous closed canopy forest. Yellow tone vegetative fuels display hardwood, willow, and alder type shrubs and grassland areas, while the green and blue tones show the subalpine brush component found near and above the tree line at higher elevations. In the right conditions, these areas can still burn and show resistance to control; however, they are less of a threat than the spruce component of the boreal forest in the Strelna planning area.

Other areas of concern include spring pre-green up conditions, where tall and matted dry grass is abundant in Strelna around homesites and previously cleared areas, and pockets of beetle-killed trees from an outbreak in the 1990s.

COMMUNITY RISK ASSESSMENT

Rating Elements



- 1. RISK/HAZARD ANALYSIS** of available fuels **inside** community (inside community to 1 mile)
- 2. RISK/HAZARD ANALYSIS** of available fuels **outside** community (1-10 miles)
- 3. BARRIERS**
- 4. FIRE PROTECTION RESOURCE AVAILABILITY**
- 5. COMMUNITY FIREWISE RATING**
- 6. OVERALL COMMUNITY RATING**

1.

INSIDE COMMUNITY:

The rating area includes lands within one mile of the community in all directions. The rating is based on history/likelihood of fire in the community and the availability of hazard fuels.

Rating: High 

Based on potential ignition sources and surrounding fuel types, the risk of fire spreading from within the community is high. Fires that start within the community are primarily human-caused and could be extinguished by community members if they have the necessary equipment and training. The times of highest concern are spring when pre-green up conditions exist, and tall, thick, and often matted grass is prevalent around many structures. Additionally, debris, trash, and inoperable vehicles are prevalent within the community boundary, creating a hazard. Burn Barrels are used by many residents to dispose of organic waste. This area sees a large influx of recreational users in the spring, summer, and fall (tourists traveling to the Wrangell – St. Elias National Park and Preserve, Kennicott Copper Mine, rafters, and hunters). Camping in non-designated spots is very common, and these users pose a very high risk of leaving campfires unattended or not fully extinguishing their fire. Additionally, vehicles utilizing non designated camping sites or traveling on off road trails could ignite fires in dry grass or vegetative fuels. Wildland fuels within one mile of Strelna in all cardinal directions consist primarily of spruce and spruce-mixed hardwood forest with pockets of beetle-killed trees.

2.

OUTSIDE COMMUNITY:

The rating area is from 1–10 miles outside the community and is based on the history/likelihood of fire in the area and the availability of hazard fuels.

Rating: High 

The potential for large fires to impact to Strelna is high. The prevalence and high concentrations of spruce (black spruce, white spruce, spruce/hardwood mix), insect (beetle-kill), and disease in mixed boreal forest and grass (seasonal cured tall standing or matted), are very receptive to wildland fire in high fire danger conditions. In addition to the influx of recreational users in the spring, summer, and fall, frequent thunderstorms and associated lightning strikes are a constant cause for wildland fire concern during the summer.

3.

BARRIERS:

This includes water, natural and human-made features.

Rating: High 

Due to a lack of significant barriers within proximity, Strelna is determined to be in the risk/hazard analysis category of high.

4.

FIRE PROTECTION RESOURCE AVAILABILITY:

Includes local and agency resources.

Rating: High 

A rating of high for resource availability criteria states that adequate initial attack resources are more than 75 minutes away and adequate extended attack resources more than 12 hours away. The Division of Forestry & Fire Protection (DOF) has statutory authority to protect forested lands from wildland fire on state, private, and borough lands and has a contractual agreement with the BLM Fire Service to provide protection of federal jurisdiction and Native lands. Valdez-Copper River Area (DOF) response times are 120+ minutes by road and approximately 50+ minutes by helicopter. Other air resources are 1 hour+ out, and extended attack resources could be as long as 12 hours away. The Strelna Volunteer Fire Department (VFD) response area is from McCarthy Road mile 5 to 52. Strelna VFD is registered with the Fire Marshall's Office. However, they do not receive notifications from Matcom 911 dispatch. Chitina Volunteer Fire Department and Kennicott / McCarthy Volunteer Fire Department assist the Strelna area in the event of a fire; however, they have longer response times. Equipment and training are needs of the Strelna VFD. Due to the terrain, radio communication is non-existent in many parts of the Strelna planning area.

5.

COMMUNITY FIREWISE RATING:

Includes landscaping, construction, water supply and access.

Rating: High 



LANDSCAPING: Less than 35% of homes and community buildings have a clearing of flammable vegetation at least 30 feet around the structure or have lawns that are mowed and watered regularly. Ladder fuels can be found throughout the community and in-between structures with pockets of trees lacking crown spacing. Tall and matted uncut grass can be found along road corridors and around structures, along with unoccupied and dilapidated structures with debris, trash, and inoperable vehicles surrounding them.



CONSTRUCTION: Less than 35% of homes are made of fire-resistant or non-combustible construction materials. Roofing materials range from metal to wood shake roofs. Many structures do not have skirting around the bottom or other general Firewise recommendations, such as covering vents and openings with wire mesh, cleaning organic debris off roofs and other surfaces that trap leaves and needles to prevent ember entrapment and ignition.



WATER SUPPLY: Less than 35% of homes do not have a reliable water source or the means to protect their property with a water source in the event of a wildland fire. The Chitina VFD relies on surface water sources year-round due to not having a community designated well.



ACCESS: The only road access route that is at least 2 lanes wide and clearly marked is the McCarthy Road. Ample turnaround space for vehicles/fire equipment exists in less than 35% of homes and community buildings. Many side roads do not have adequate road signage or clearance from brush. Due to persistent landslides within the Copper Basin all roads that exist along bluffs and rivers are susceptible to sluffing. Additionally, ongoing construction and road closers could impact the McCarthy Road which is the only escape route.

Escape Routes:

1. McCarthy Road to the east and west

Safety Zones:

1. Gravel Pit — Accessed by the McCarthy Road located at mile 18.5 east of the Kuskulana River Bridge
2. Gravel Pit — Accessed on the north side of the McCarthy at mile 26.7 west of the Chokosna River
3. Strelna Volunteer Fire Department — Accessed by the McCarthy Road located at mile 10.



6. OVERALL COMMUNITY RATING:

OVERALL RATING CHART SUMMARY

<p>1. RISK/HAZARD ANALYSIS of available fuels inside community to 1 mi</p>	<p> HIGH</p>
<p>2. RISK/HAZARD ANALYSIS (available fuels outside community 1–10 mi)</p>	<p> HIGH</p>
<p>3. BARRIERS</p>	<p> HIGH</p>
<p>4. FIRE PROTECTION RESOURCE AVAILABILITY</p>	<p> HIGH</p>
<p>5. COMMUNITY FIREWISE RATING</p>	<p> HIGH</p>

The overall assessment shows the threat of danger from wildland fire to the community of Strelna as high in all categories. Due to the remoteness and extended response time of resources, the scattering of off grid residents living miles off the McCarthy Road on seasonably passable 4x4 trails with minimal communication, and continuous spruce, this community’s overall risk rating is elevated to very high.

Wildland fire risk to the Strelna community using Wildfirerisk.org data is unavailable for this community area. However, Chitina’s wildfire risk rating is very high at 90% and McCarthy’s wildland fire risk is high at 84%. Risk is determined by the Risk to Homes national percentile rank of the selected community, county, tribal area or state. Low is less than 40th percentile; Medium is 40th –70th percentile; High is 70th –90th percentile; Very High is equal to or greater than 90th percentile. More information can be found at wildfirerisk.org.

Action Plan

The Strelna Community Wildfire Protection Plan (CWPP) aims to address the wildland fire risks in the Strelna area, located in the Copper River Basin in Southcentral Alaska. This region is prone to wildland fires due to its boreal forest ecosystem, which requires fire to regenerate and maintain ecological balance. However, wildland fires poses a significant threat to the community, its infrastructure, and areas of cultural significance. Frequent lightning strikes and human activities are the major causes of wildland fires in the area.

The plan assesses various risk factors including the types of vegetation that can fuel fires, such as black and white spruce, mixed hardwood forests, grass, and shrublands. These fuels are highly flammable and can lead to high-intensity fires. Around homesites, there are additional hazards like tall, dry grass, debris, inoperable vehicles, and inadequate road signage. Surrounding the road corridor, similar vegetative fuels extend the risk zone up to 10 miles away.

Natural barriers such as lakes and bogs provide some protection, but there are significant gaps in all cardinal directions. The local volunteer fire department (VFD) faces challenges due to limited resources, inadequate training and equipment, as well as restricted radio coverage. Incoming emergency resources experience long response times.

By addressing these concerns and implementing appropriate measures, the plan aims to reduce the wildland fire risk to Strelna, making it safer for residents and preserving its natural and cultural resources.

PRIORITIZED ASSESSMENT FINDINGS

1. Dry grasses especially around structures during pre-green up
2. Not having clear road signs
3. Homes and businesses not being Firewised
4. Driveways inaccessible to emergency vehicles
5. Long response times for first responders
6. VFD training needs
7. Unsafe burning practices
8. Public wildland fire education
9. Lack of adequate radio communications
10. Protection of Native heritage sites
11. Update Maps and Place Names
12. Shaded Fuel Break Around Kotsina Road Communities
13. Silver Lake/Sculpin (Nelson) Lake Fuel Break
14. Identify other fuel reduction projects
15. Remote Wildland Urban Interface Helispots and cash sites
16. Create Community Emergency Plan
17. Lack of subsurface water source
18. Community Woody Mass Disposal Site
19. Biomass Viability

TASKS AND MATRIX OF MITIGATION MEASURES

The following table is a task matrix and identifies solutions for each prioritized assessment finding listed in the previous section. Ensuring proper risk mitigation and potential entities that may address these tasks.

ASSESSMENT FINDING	ASSOCIATED TASK	RESPONSIBLE ENTITIES
Dry grasses especially around structures during pre-green up (Implementation)	<ol style="list-style-type: none"> Educate home and business owners on dangers of pre-green up dry grass and removal actions. Implement mitigation program through grant funding. 	<p>Homeowners</p> <p>State of Alaska Division of Forestry & Fire Protection</p>
Community roads do not have clear road signs (Implementation)	<ol style="list-style-type: none"> Update maps. Clear brush around existing road signs. Work with DOT to install new road signs. 	<p>State of Alaska Department of Transportation</p> <p>State of Alaska Division of Forestry & Fire Protection</p>
Homes and businesses need to be Firewised (Implementation)	<ol style="list-style-type: none"> Educate homeowners on Firewise and home hardening principles. VFD participation on home / structure assessments and creation of defensible space. Apply for a Firewise grant program that will establish a cost share program for homeowners. Identify/designate an area or equipment for the community members to dispose of woody mass byproduct. Apply for grant program and funding for a community cleanup project for removal of hazardous materials such as but not limited to inoperable vehicles, tires, and other hazards. Complete a hazardous materials cleanup project on homes/structures within the planning area. Adopt State of Alaska Stewardship Program model for Firewise home assessments. 	<p>Bureau of Indian Affairs</p> <p>Homeowners</p> <p>State of Alaska Department of Environmental Conservation</p> <p>State of Alaska Division of Forestry & Fire Protection</p> <p>Strelna Volunteer Fire Department</p>
Driveways inaccessible to emergency vehicles/address ingress and egress concerns (Implementation)	<ol style="list-style-type: none"> Initiate contact with AK DOT and Native entities to have an assessment done and recommendations to widen main roads. Apply for grants to assist homeowners in widening existing roads and driveways to support large firefighting apparatus. 	<p>State of Alaska Department of Transportation</p> <p>State of Alaska Division of Forestry & Fire Protection</p> <p>Wrangell - St. Elias National Park and Preserve</p>
Long response times for first responders/firefighters (Implementation) (Planning)	<ol style="list-style-type: none"> Provide VFD with training needs. 	<p>State of Alaska Division of Forestry & Fire Protection</p> <p>Strelna Volunteer Fire Department</p> <p>Wrangell - St. Elias National Park and Preserve</p>

ASSESSMENT FINDING	ASSOCIATED TASK	RESPONSIBLE ENTITIES
<p>VFD training and equipment needs (Implementation)</p>	<ol style="list-style-type: none"> 1. Maintain a community wildland fire response program with training, equipment, and coordination with the State of Alaska Copper River DOF office; including but not limited to: fire extinguisher, fedcos, hand tools, fire engine, pumps, and hose located at potential cash sites. 2. Strengthen local prevention programs in coordination with Copper River DOF. 3. Work with Matcom to utilize phone notifications in absence of adequate radio communications. 4. Advertise for recruitment of new VFD members. 	<p>State of Alaska Division of Forestry & Fire Protection</p> <p>Strelna Volunteer Fire Department</p>
<p>Unsafe burning practices (Implementation)</p>	<ol style="list-style-type: none"> 1. Implement wildland fire and debris burning safety programs into the community. 2. Hold community fire safety events and education opportunities. 3. Post signage and information around community, campgrounds and fishwheel sites. 	<p>State of Alaska Division of Forestry & Fire Protection</p> <p>Strelna Volunteer Fire Department</p>
<p>Public wildland fire education (Implementation)</p>	<ol style="list-style-type: none"> 1. Promote teaching general wildland fire knowledge to the community with emphasis on safe burning practices and creating defensible space through Firewise and Home Hardening programs. 2. Continue wildland fire education outreach in schools. 	<p>Bureau of Indian Affairs</p> <p>State of Alaska Division of Forestry & Fire Protection</p> <p>Strelna Volunteer Fire Department</p> <p>Wrangell - St. Elias National Park and Preserve</p>
<p>Lack of adequate communications (Implementation)</p>	<ol style="list-style-type: none"> 1. Work with DOF to set up a permanent or seasonal repeater. 2. Coordinate use with multiple agencies including EMS and VFD. 3. Update VFD radios. 4. Work with Matcom to utilize phone notifications in absence of adequate radio communications. 	<p>State of Alaska Division of Forestry & Fire Protection</p> <p>Strelna Volunteer Fire Department</p> <p>Wrangell - St. Elias National Park and Preserve</p>
<p>Protection of Native Heritage Sites (Implementation)</p>	<ol style="list-style-type: none"> 1. Native entities internally identify heritage sites to be protected. 2. Implement appropriate measures and desired fire suppression tactics for protecting these areas. 3. Insure they are denoted as “other land” contact land manager on Know Sites Database. 	<p>Bureau of Indian Affairs</p> <p>Bureau of Land Management</p> <p>State of Alaska Division of Forestry & Fire Protection</p> <p>Wrangell - St. Elias National Park and Preserve</p>

ASSESSMENT FINDING	ASSOCIATED TASK	RESPONSIBLE ENTITIES
<p>Update maps and place names (Implementation)</p>	<ol style="list-style-type: none"> 1. Coordinate public outreach to gather community standardized place names. 2. Update existing sitemap place names to incorporate more than one commonly used name and/or make one standardized place name. 	<p>Bureau of Indian Affairs Bureau of Land Management State of Alaska Division of Forestry & Fire Protection Strelna Volunteer Fire Department Wrangell - St. Elias National Park and Preserve</p>
<p>Shaded fuel break around Kotsina Road community (Planning)</p>	<ol style="list-style-type: none"> 1. Examine the viability of a small-scale fuel break around structure clusters where topography and fuels align. 2. Hazardous fuel reduction around Strelna Creek homesites. 	<p>Bureau of Indian Affairs Bureau of Land Management State of Alaska Division of Forestry & Fire Protection Strelna Volunteer Fire Department Wrangell - St. Elias National Park and Preserve</p>
<p>Silver Lake/Sculpin (Nelson) Lake fuel break (Planning)</p>	<ol style="list-style-type: none"> 1. Examine the viability of connecting the lakes with a fuel break. 2. Connect western and eastern lakes back to McCarthy Road. 3. Designate a helispot within the fuel break. 4. Plan and implement methods to repurpose fuel break byproduct for community firewood/ biomass if applicable. 	<p>Bureau of Indian Affairs Bureau of Land Management State of Alaska Division of Forestry & Fire Protection Strelna Volunteer Fire Department Wrangell - St. Elias National Park and Preserve</p>
<p>Identity other fuel reduction projects (Planning)</p>	<ol style="list-style-type: none"> 1. Determine areas where spring pre-green up grasses pose a threat. 2. Determine areas of beetle-kill and other dead-standing timber. 3. Identify other infrastructure to be protected, plan fuel reduction / fuels removal project to protect them. 4. Address work through mitigation plans. 	<p>State of Alaska Division of Forestry & Fire Protection</p>
<p>Remote wildland urban interface helispots and cache sites (Planning) (Implementation)</p>	<ol style="list-style-type: none"> 1. Identify and construct strategic helispots. 2. Helispots should correspond with a written structure protection plan that could include pre-established agency gear caches to streamline operations during large-scale structure protection. 3. Helispots should be at points that are deemed dual purpose such as incorporated into a fuel break. 	<p>Bureau of Indian Affairs Bureau of Land Management State of Alaska Division of Forestry & Fire Protection Strelna Volunteer Fire Department Wrangell - St. Elias National Park and Preserve</p>

ASSESSMENT FINDING	ASSOCIATED TASK	RESPONSIBLE ENTITIES
<p>Create an evacuation plan (Planning)</p>	<ol style="list-style-type: none"> 1. Have agencies work with each other to create a community emergency plan. 2. Include a centralized community contact list. 3. Include maps with road signage and house identifiers (in conjunction with community Firewise mapping). 4. Adopt Alaska Ready, Set, Go standards. 5. Work with State of Alaska Emergency Coordination Center and Copper Valley Telephone to set up an emergency alert system. 	<p>Copper Valley Telephone Bureau of Indian Affairs Bureau of Land Management Local Emergency Planning Committee State of Alaska Division of Homeland Security and Emergency Management State of Alaska Division of Forestry & Fire Protection Strelna Volunteer Fire Department Wrangell - St. Elias National Park and Preserve</p>
<p>Lack of subsurface water source (Implementation)</p>	<ol style="list-style-type: none"> 1. Identify area for community well to be drilled. 2. Apply for a grant to fund the project. 	<p>Copper River Development Association Strelna Volunteer Fire Department</p>
<p>Community woody mass disposal site (Implementation)</p>	<ol style="list-style-type: none"> 1. Identify/designate an area for the community members to dispose of woody mass byproduct. 	<p>State of Alaska Division of Forestry & Fire Protection Strelna Volunteer Fire Department Wrangell - St. Elias National Park and Preserve</p>
<p>Biomass viability (Implementation)</p>	<ol style="list-style-type: none"> 1. Continually reevaluate the viability of biomass solutions. 	<p>Copper River Development Association State of Alaska Division of Forestry & Fire Protection Strelna Volunteer Fire Department</p>

Summary, Review, and Updating Process

The community of Strelna has a very high risk of wildland fire potential and impact. Due to the type of fuels both inside and outside of the community, fire protection resource availability, and the overall community Firewise rating to include safety zones and escape routes, are all given the score of high wildland fire potential. Combined with the high rating for natural and manmade barriers, Strelna's overall assessment findings show a very high threat of danger from wildland fire.

Wildfirerisk.org. does not outline Strelna’s wildland fire risk but does identify Chitina’s wildland fire risk of 90% higher than other communities and McCarthy’s wildland fire risk is high as 84% higher than other communities throughout the United States. (July 2024)

Through collaboration on this CWPP, community members and organizations, Native entities, and the Strelna VFD will take the first steps to mitigate the potential negative impacts from wildland fire. The community along with its entities are encouraged to continue fuels mitigation, education, and implementation that are consistent with the Alaska Firewise program.

This is a living document, where changes can be discussed and made at any time. Review and updating this CWPP is recommended to take place every three (3) years, not to extend past five (5) years. The Community Risk Assessment and Action Plan should be reviewed and updated by subject matter experts, through solicited information via public meetings with community members and landowners.

The following table represents the timeline that the Strelna CWPP needs to be reviewed, updated and when it expires.

REVIEW: 3 YEARS	UPDATE: 5 YEARS	EXPIRE: 10 YEARS
December 1, 2028	December 1, 2030	December 1, 2035

Signature Page

This plan has been reviewed and approved by the following:

Signed by:
X Norm McDonald - State of Alaska Forestry & Fire Protection, Deputy Director (Fire)
E5B67CB06214470... Date _____

State of Alaska Forestry & Fire Protection, Deputy Director (Fire)

X **JOSHUA SCOTT** Digitally signed by JOSHUA SCOTT
Date: 2026.01.09 13:12:15 -09'00' Date _____

Wrangell - St. Elias National Park and Preserve

X William M. Dunk Digitally signed by WILLIAM
DUNK
Date: 2026.01.14 13:37:44 -09'00' Date _____

Bureau of Land Management

X **JOLENE JOHN** Digitally signed by JOLENE JOHN
Date: 2026.01.16 11:59:34 -09'00' Date _____

Bureau of Indian Affairs

X _____ Date _____

Signed by: **Altna Inc.**
X Daniel D. Morrison
820CE15889C84B4... Date _____

VFD Community Representative



Appendix A

The Strelna Community Wildfire Protection Plan (CWPP) is a collaborative effort created in response to the 2003 Healthy Forest Restoration Act (HFRA) which directs communities at risk for wildland fire to develop a risk assessment and mitigation plan (Community Wildfire Protection Plan Guidance, 2023). The HFRA includes the following guidance:

The minimum requirements for a CWPP as described in the HFRA are: (1) Collaboration: A CWPP must be collaboratively developed by local and state government representatives, in consultation with federal agencies and other interested parties. (2) Prioritized Fuel Reduction: A CWPP must identify and prioritize areas for hazardous fuel reduction treatments and recommend the types and methods of treatment that will protect one or more at-risk communities and essential infrastructure. (3) Treatment of Structural Ignitability: A CWPP must recommend measures that homeowners and communities can take to reduce the ignitability of structures throughout the area addressed by the plan (*H.R.1904 - Healthy Forests Restoration Act of 2003, 2003*).

Additionally, the Alaska Interagency Fire Management Plan, of which the State of Alaska Division of Forestry & Fire Protection is a signatory, recognizes that each of the land-managing Federal and State agencies and ANCSA corporations in Alaska have their own missions, goals, and objectives related to their lands and that to effectively prioritize and manage Alaska wildland fires there is a need to consider the full spectrum of initial responses to wildland fire; from suppression actions designed to contain and control wildland fire growth, to periodic surveillance of wildland fires that are allowed to spread naturally across the landscape. To accomplish this, jurisdictional organizations and protecting agencies have collaboratively assigned one of four wildland fire management options (Critical, Full, Modified, and Limited) to nearly all lands in Alaska. Pre-identified Wildland Fire Management Options allow fire managers to:

- Quickly prioritize areas for protection actions and the allocation of available initial attack firefighting resources to achieve protection objectives.
- Optimize the ability to achieve land use and resource management objectives and integrate fire management, mission objectives, land use, and natural resource goals.
- Reinforce the premise that the cost of suppression efforts should be commensurate with the economic, social, and resource values identified for protection. (*Alaska Interagency Wildland Fire Management Plan, 2024*).

Wildland fire management in Alaska is a joint effort among federal, state, local, and tribal governments, native organizations, local fire departments, communities, and landowners. The land management agencies, also known as jurisdictional agencies, have the overall land and resource management responsibilities as provided by federal, state, or local law. The “Alaska Master Cooperative Wildland Fire Management and

Stafford Act Response Agreement” improves Alaskan fire management agencies’ efficiency in responding to wildland fire by facilitating the coordination and exchange of personnel, equipment, supplies, services, and funds while sustaining activities such as prevention, preparedness, communication and education, fuels treatment and hazard mitigation, fire planning, response strategies, tactics and alternatives, suppression, and post-fire rehabilitation and restoration.

Furthermore, future conditions for wildland fire hazards, including climate change; an intensified pattern of wildland fire is emerging in Alaska as rapidly increasing temperatures and longer growing seasons alter the state's environment. Both tundra and boreal forest regions are seeing larger and more frequent wildland fires. The impacts of these fires are felt across the state. In response to changing wildland fire patterns, Alaska's fire management agencies are adapting quickly. The use of remote sensing tools, such as data from satellites, and science-based decision making have been a critical component in responding to intensified wildland fire seasons (State of Alaska State Hazard Mitigation Plan, 2023).

The Statewide Operating Plan (SOP) is applicable to all signatory parties to the Alaska Master Agreement (AMA). Its purpose is to address statewide issues affecting cooperation, interagency working relationships and protocols, financial arrangements, sharing of resources, and joint activities/projects.

Jurisdictional agencies (as identified in the Alaska Master Agreement) are responsible for all planning documents (e.g., land use plans, resource management plans, fire management plans, and decision support documents) for a unit’s wildland fire and fuels management program.

Protecting agencies (as identified in the Alaska Master Agreement) are responsible for implementing the actions documented and directed by the appropriate planning and decision support documents for initial and extended attack on wildland fire incidents. They provide supervision and support including operational oversight, direction, and logistical support to incident management teams (IMTs) (*Alaska Master Cooperative Wildland Fire Management and Standford Act Response Agreement, 2020*).

The State of Alaska Forest Action Plan (FAP) seeks to prioritize areas where forests matter most to Alaska’s people—forest lands and wildland urban interface areas that have been identified through the robust Alaska Interagency Wildland Fire Management Plan as having resources requiring fire protection; private forest lands including Alaska Native corporation lands; and state forests and state land classified for forestry. This plan also highlights the following key goals relevant to fire management on State of Alaska lands:

1. Cultivate fire adapted communities
2. Manage fuels to reduce risk to communities & to benefit forest ecosystems (*2020 Forest Action Plan, 2020*)

Similarly, the National Cohesive Wildland Fire Management Strategy Addendum Update (Addendum Update) identifies new drivers impacting the wildland fire management

system. As Federal agencies, states, tribes, and the private sector all ramp up work together to meet the challenge of the wildland fire crisis, stakeholders are challenged to reach beyond individual, organizational, and historical silos to collectively define and understand their risk; set landscape-level and community-wide priorities; share and co-manage risk across boundaries and jurisdictions; accept some short-term risk for long-term benefit; and collectively invest in outcome-based approaches and activities, rather than outputs. The Addendum Update elevates critical issues like climate change and environmental justice and defines key challenges that are not limited to one agency or organization, provides new guidance for stakeholders addressing today's wildland fire challenges and aims to "safely and effectively extinguish fire, when needed; use fire where allowable; manage natural resources; and collectively, learn to live with wildland fire." The updated National Cohesive Strategy goals include:

1. Resilient Landscapes – Landscapes, regardless of jurisdictional boundaries are resilient to fire, insect, disease, invasive species and climate change disturbances, in accordance with management objectives.
2. Fire Adapted Communities – Human populations and infrastructure are as prepared as possible to receive, respond to, and recover from wildland fire.
3. Safe, Effective, Risk-based Wildland fire Response – All jurisdictions participate in making and implementing safe, effective, efficient risk-based wildland fire management decisions (Wildland Fire Leadership Council, 2023).

Ultimately, the Community Wildfire Protection Plan (CWPP) process aligns with the goals outlined by the National Cohesive Strategy and the State of Alaska Forest Action Plan, and offers prescriptive recommendations based on feedback gathered at the community level, while referencing Fire Management Response Guidance from the AIWFMP, Stafford Act and SHMP. This collaborative planning process assists communities in developing an appropriate and desired wildland fire protection plan to guide future mitigation efforts. Completion of this CWPP involved the following steps:

- 1) Identify stakeholders, land management agencies, and interested parties.
- 2) Establish a community planning area.
- 3) Develop a community risk assessment.
- 4) Ongoing opportunities for community input through surveys, public meetings, and the creation of a dedicated website.
- 5) Address priorities through stakeholder meetings and public input.
- 6) Development of an action plan and task-matrix.
- 7) Finalization of the plan with a total of three public community meetings throughout the process.

Appendix B

Assessment of Hazard, Barriers, and Defensible Space Rating Criteria (Community Risk Assessment)

Rating Elements

- 1) Risk/Hazard Analysis of available fuels inside community (inside community to 1 mile)
- 2) Risk/Hazard Analysis of available fuels outside community (1-10miles)
- 3) Barriers
- 4) Fire Protection Resource Availability
- 5) Community Firewise Rating
- 6) Overall Community Rating
- 7) Wildfire Risk to Communities (wildfirerisk.org) Rating Summary

Risk/Hazard Analysis, Available Fuels

The Copper River Basin is classified as Fire Regime Group IV, which means a stand replacement severity fire is possible every 35-100+ years.

1. **Inside Community:** The rating area includes lands within one mile of the community in all directions. The rating is based on history/likelihood of fire in the community and the availability of hazard fuels.

RISK/HAZARD ANALYSIS AVAILABLE FUELS CHART 1

FUELS (predicted fire behavior based on historic summertime weather with hot, dry conditions)	Alaska Fire Return Interval: High 0-99 years	Where Found:
Black Spruce Boreal Forest (CFFDRS=C2) <i>rate of spread: high intensity: high spotting potential: high</i>	HIGH	
Black Spruce Lichen Woodland (CFFDRS=C1) <i>rate of spread: moderate intensity: moderate spotting potential: high</i>	HIGH	
Grass (cured tall standing or matted; CFFDRS = O1a/O1b) <i>rate of spread: high intensity: moderate: spotting potential: low</i>	HIGH	
Mixed Boreal Forest (may include white or black spruce, aspen and/or birch; CFFDRS=M1) <i>rate of spread: moderate intensity: moderate spotting potential: moderate</i>	MODERATE	
Hardwood Forest (includes aspen & birch; CFFDRS use D1 or M1, M2) <i>rate of spread: low intensity: low spotting potential: low</i>	MODERATE	
Deciduous Brush (includes willow & alder) <i>rate of spread: low intensity: low spotting potential: low</i>	LOW	
Insect and Disease in Mixed Boreal Forest (may include white or black spruce, aspen and/or birch) <i>rate of spread: moderate intensity: High spotting potential: High</i>	MODERATE	

Narrative description fuels within one mile of community.

2. **Outside Community:** The rating area is from 1-10 miles outside the community and is based on the history/likelihood of fire in the area and the availability of hazard fuels.

RISK/HAZARD ANALYSIS AVAILABLE FUELS CHART 2

FUELS (predicted fire behavior based on historic summertime weather with hot, dry conditions)	Alaska Fire Return Interval: High 0-99 years	Where Found:
Black Spruce Boreal Forest (CFFDRS=C2) <i>rate of spread: high intensity: high spotting potential: high</i>	HIGH	
Black Spruce Lichen Woodland (CFFDRS=C1) <i>rate of spread: moderate intensity: moderate spotting potential: high</i>	HIGH	
Grass (cured tall standing or matted; CFFDRS = O1a/O1b) <i>rate of spread: high intensity: moderate: spotting potential: low</i>	HIGH	
Mixed Boreal Forest (may include white or black spruce, aspen and/or birch; CFFDRS=M1) <i>rate of spread: moderate intensity: moderate spotting potential: moderate</i>	MODERATE	
Hardwood Forest (includes aspen & birch; CFFDRS use D1 or M1, M2) <i>rate of spread: low intensity: low spotting potential: low</i>	MODERATE	
Deciduous Brush (includes willow & alder) <i>rate of spread: low intensity: low spotting potential: low</i>	LOW	
Insect and Disease in Mixed Boreal Forest (may include white or black spruce, aspen and/or birch) <i>rate of spread: moderate intensity: High spotting potential: High</i>	MODERATE	

Narrative description fuels 1-10 miles from community.

3. Barriers

Standards for rating natural and constructed (human-made) barriers:

Low Fire Danger: The community has a natural or constructed barriers that provide thorough protection from fuels less than 1 mile away in at least 3 cardinal directions. An example of this would be a small community sandwiched between a major river and a runway, or a community on an island

Moderate Fire Danger: The community has natural or constructed barriers that provide thorough protection from fuels less than 1 mile away in at least two cardinal directions. Communities may have multiple barriers affecting a rating. Examples are airstrips separating a community from significant outside fuels, communities set amidst less flammable vegetation types, or communities situated on major rivers.

High Fire Danger: Any barriers that exist which provide protection from fuels less than 1 mile away in fewer than two cardinal directions. Examples of insignificant barriers are small streams or sloughs with narrow riparian zones situated in highly flammable fuel types.

BARRIER RATING CHART

Barrier Type	Rating for Community (Low, Moderate or High Fire Danger)	Where Found:
Water Features		
Other Natural Features		
Constructed (Human-made) Features		
Overall Community Barrier Rating		

Narrative description of natural barriers.

Narrative description of constructed (human-made) barriers.

4. Fire Protection Resource Availability

FIRE PROTECTION RESOURCES RESPONSE CHART

Response Time	Risk	Kind of Response (List resources available for initial attack)
Adequate initial attack resources are more than 75 minutes away and adequate extended attack resources are more than 12 hours away.	High	
Adequate initial attack resources are 30- 75 minutes away and adequate extended attack can be in place in 8-12 hours.	Moderate	
Adequate initial attack resources are less than 30 minutes away and adequate extended attack can be in place in less than 8 hours.	Low	
Overall Fire Response Rating		

Narrative description of fire protection resources.

5. Community Firewise Rating

Alaska Firewise Standards for Creating Defensible Space

Landscaping: There is a clearing of flammable vegetation at least 30 feet around the home for firefighting equipment: coniferous brush and dead/overhanging branches are removed; trees are pruned 6-10 feet above the ground; lawn is mowed and watered regularly, and ladder fuels are removed from the yard; remaining trees are spaced at least 30’ apart at crowns; garden equipment (hoses and hand tools) are kept on the property.

Construction Guidelines: Home is made of fire-resistant or non-combustible construction materials (especially important for roofing); vents are covered with wire mesh no larger than 1/8 inch; at least two ground-level doors exist; at least two means of escape exist in each room.

Water Supply Guidelines: Home has a reliable water source, 3 to 4 sprinklers and enough hose to circle the home.

Access Guidelines: Access roads are at least 2 lanes wide and clearly marked; ample turnaround space exists for vehicles/fire equipment. Clear of Flammables/Refuse/Debris Guidelines: Combustible materials are not located in the yard or under decks or porches; firewood is stored away (at least 30 feet) from the house; all debris or refuse is picked up regularly.

COMMUNITY FIREWISE FOR DEFENSIBLE SPACE RATING CHART
(Overall community assessment, not individual structures)

Alaska Firewise Standards	Low Excellent Over 65% of homesites and community buildings meet standard	Moderate Between 35- 65% of homesites and community buildings meet standard	High Less than 35% of homesites and community buildings meet standard
Landscaping			
Construction			
Water Supply			
Clear of Flammables/ Refuse/ Debris (flammables stored properly & area cleared)			
Overall Rating			

Narrative description of fire protection resources.

6. Overall Community Rating

OVERALL RATING CHART

Category	Rating
Risk/Hazard Analysis of available fuels inside community (inside community to 1 mile)	
Risk/Hazard Analysis of available fuels outside community (1-10miles)	
Barriers	
Fire Protection Resource Availability	
Community Firewise Rating	

Narrative on other contributing factors to risk and mitigation of wildland fire in this community.

7. Wildfire Risk to Communities (wildfirerisk.org) Rating Summary

Appendix C

Fjordland Fire Solutions

C.1 — RISK ASSESSMENT AND ACTION PLAN



CONTENTS



PAGES 3-11

COMMUNITY CONCERNS
MITIGATION PRIORITIES

PAGES 12-14

MAPS

PAGES 15-21

COMMUNITY RISK ASSESSMENT

STRELNA 2

FJØRDLAND FIRE SOLUTIONS

COMMUNITY CONCERNS

- Remoteness of different communities
- Single access egress
- Improper burning practices
- VFD equipment and capabilities

MITIGATION PRIORITIES

1

Establish Exposure Model Map/Update Existing Fire Department Sitemap

Associated Tasks

1. Update existing sitemap with a focus on standardization of place names
 - a. Focus on places with more than one commonly used name and make the one standardized name known
2. Create mapping system of Strelna Community to determine which structures are most at risk of wildfire exposure
 - a. Metrics should include fuels, topography and terrain-driven wind influences
 - b. Use exposure model mapping system to establish community defensible space priorities
3. Coordinate public outreach to inform homes/neighborhoods of their risk determinations, as well as standardized names

Additional Notes

Exposure Model Mapping to be made public so-as to encourage a sense of individual homeowner responsibility for the Firewising of their own homes. Focus on road signage and site signage for standardization of place names. Consider adding signage to Safety Zones.

MITIGATION PRIORITIES

2

Community Firewise / Defensible Space

Associated Tasks

1. Educate public in the fundamental need for Escape Routes and Safety Zones for every household/business
2. Reinstigate WUI Grant Cost Share Incentive Program for private/homeowner fuels reduction around structures
3. Adopt and apply Alaska Firewise Standards to all at-risk structures
 - Firewise should include ample escape routes and safety zones for every household, as well as alternate escape routes and safety zones. If escape routes/safety zones are not viable, construct them
 - Firewise should include evacuation plan for all pets and livestock
 - Widen overgrown escape routes and establish ample ingress, egress, structural road capacities, and turnarounds for Emergency Vehicles
4. Post clear signage throughout community
5. Create system of structure mapping (including Firewise ratings) for land manager/emergency responder use
6. Pursue available funding pathways to the offsetting of homeowner cost of defensible space equipment i.e. exterior sprinklers
7. Provide community Firewise outreach and education
8. Institute program to remove junk vehicles and other hazmat

Additional Notes

It should be emphasized to the community that fuels reduction focus should be primarily on Spruce species and tall grasses.

Firewise efforts should be combined with Forest Stewardship Program directives.

It should be emphasized to community members that spruce is best cut at a certain time of year in order to mitigate the spread of spruce beetles.

MITIGATION PRIORITIES

3

Road Widening of Fuels/Structure Defensible Space on Nugget Creek Road

Associated Tasks

1. Look for opportunities to cut back fuels on Nugget Creek Road to ROW limits where it is primarily through black spruce and does not have a hardwood/deciduous component
2. Emphasize to the northernmost community the need for a viable safety zone, escape route, and ample defensible space
 - a. Evacuation plan for this community should include any livestock

Additional Notes

The focus on this community is due to its single access/egress as well as the prevalence of continuous black spruce.

4

Shaded Fuel Breaks Around Nugget Creek Road Communities

Associated Tasks

1. Examine the viability/construct small-scale shaded fuel breaks around these structure clusters where topography and fuels call for them and where land ownership borders allow for them
 - a. Tie fuel breaks into hardwoods where possible

MITIGATION PRIORITIES

5

Fuel Break Encompassing the Structures on Silver Lake/Sculpin (Nelson) Lake

Associated Tasks

1. Examine the viability of connecting lakes with a fuel break to protect strategic clusters of structures in this area. Examine the viability of also connecting westernmost and easternmost lakes back to McCarthy Rd, effectively closing the box
2. If possible, construct fuel break with emphasis on improved agency firefighter access
3. If necessary, integrate construction of designated helispots within fuel break to deploy agency resources
4. If viable, select fuel break location in a dual-purpose area
5. Plan and implement methods to repurpose fuel break byproduct (woody mass material) for community firewood, biomass if applicable, etc.

MITIGATION PRIORITIES

6

Evaluation/Implementation of Potential Helispots in Remote Wildland Urban Interface

Associated Tasks

1. Identify and construct strategic helispots where necessary throughout Strelna
 - a. Prioritization for helispots should correspond to the difficulty of current access by agency resources
 - b. This mitigates the road condition and distance of Mccarthy Rd with the goal of faster agency response times
2. Helispots should correspond with a written structure protection plan and could include pre-established agency gear caches to streamline operations during large-scale structure protection operations
3. Look to construct helispots at points that are deemed dual purpose, i.e. incorporated into a strategic fuel break

Additional Notes

A close working relationship with the Alaska Smokejumpers and the Alaska Smokejumper Paracargo Program would be beneficial to mitigate the access issues of Mccarthy Rd.

7

Improved EMS Communication Coverage

Associated Tasks

1. Determine the best location, then deploy an agency radio repeater for Emergency Services use to mitigate gaps in radio communication coverage

MITIGATION PRIORITIES

8

Create Community Emergency Plan

Associated Tasks

1. Create Community Emergency Plan
 - a. Include updated and centralized community contact list
 - b. Include maps with road signage and house identifiers (in conjunction with community Firewise mapping)
2. Identify and mitigate all communication issues that could arise during an emergency situation

Additional Notes

Consider using existing models for small community Emergency Plans such as SCERP.

9

VFD Training & Funding

Associated Tasks

1. Apply for Federal/State Grants to bolster VFD with improved infrastructure, equipment and training
 - a. Frequent training and standardization of Standard Operating Procedures between VFD, DOF and Park Service employees
 - b. Increased Wildfire training and equipment

Additional Notes

Emphasis on Wildfire Training for VFD including but not limited to FFT2. Emphasis should be placed on equipment that benefits both the VFD and DOF/Agency Firefighters i.e. Water Tenders.

MITIGATION PRIORITIES

10

Protection of Native Heritage Sites and Allotments

Associated Tasks

1. Identify heritage sites/allotments to be protected and implement appropriate measures
 - a. Create improved mapping of heritage sites and allotments so that agency firefighters can locate and protect.

11

Community Woody Mass Disposal Site

Associated Tasks

1. Identify/designate an area for the community/private landowner to dispose of woody mass byproduct of community Firewise and fuel reduction projects
 - a. Ideal area would be easily accessible
 - b. Allow community access to repurpose woody mass accumulation for firewood, biomass, etc.

12

Biomass Viability

Associated Tasks

1. Continually reevaluate the viability of biomass solutions in Strelna and outlying communities, including the viability of cooperating with other communities' programs
2. Explore the possibility of biomass utilization of byproducts of the mitigation of community firewise efforts

MITIGATION PRIORITIES

13

Standing Dead Timber Mitigation

Associated Tasks

1. Determine areas in which beetle-kill and other dead-standing timber can be accessed
2. Explore the viability of opening or gaining access to these areas for the purpose of community/private firewood or other viable biomass opportunities
3. Public outreach to make these areas known

14

Public Wildfire Education

Associated Tasks

1. Explore the viability of teaching general wildfire knowledge to the community with emphasis on basic wildfire behavior
2. Reinstitute/continue wildfire education outreach in schools
3. Special emphasis on safe homeowner burning practices

Additional Notes

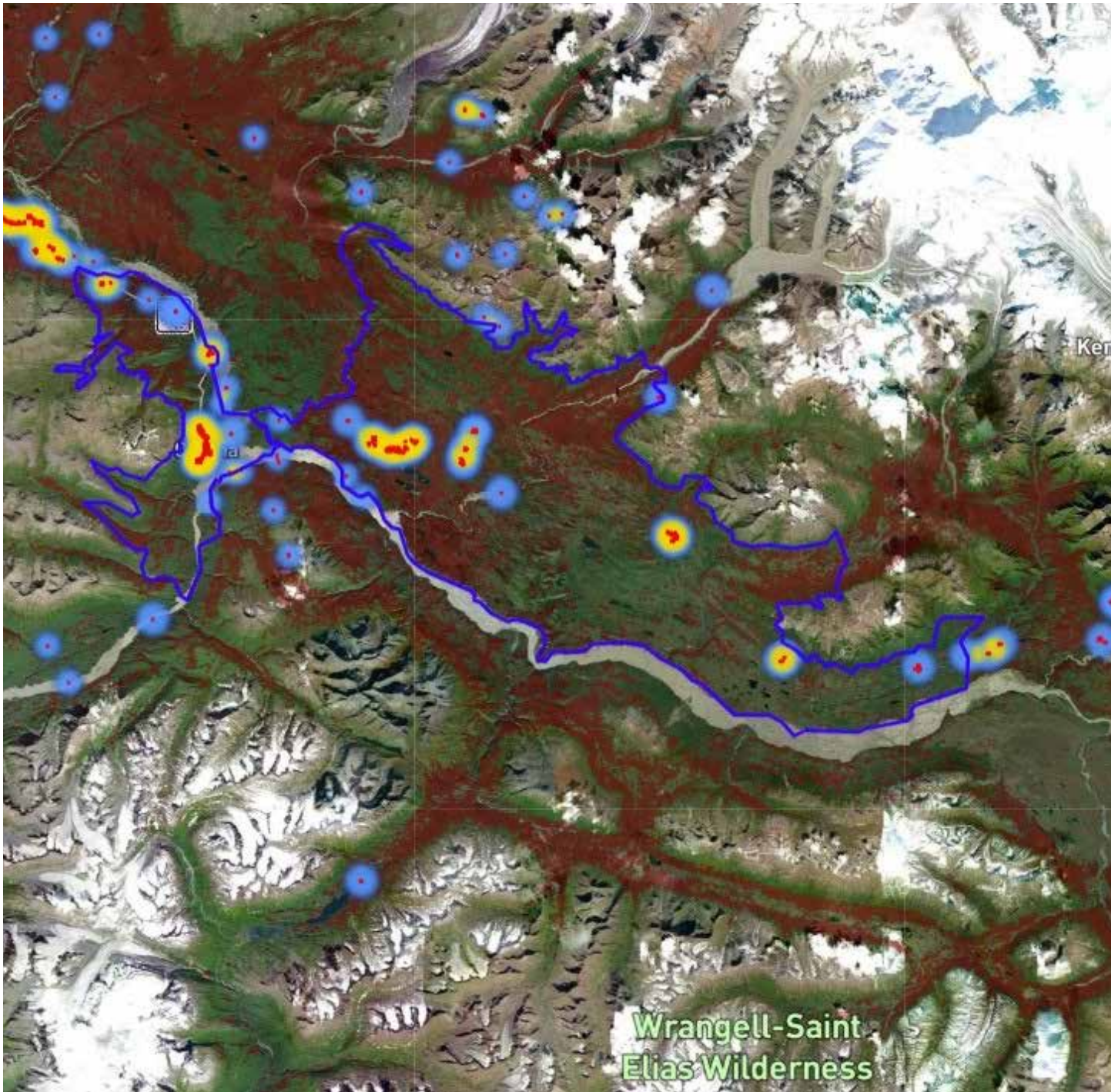
Emphasis in education should be placed foremost on the need for Primary and Secondary Escape Routes and Safety Zones for every household.

C.2 — MAPS

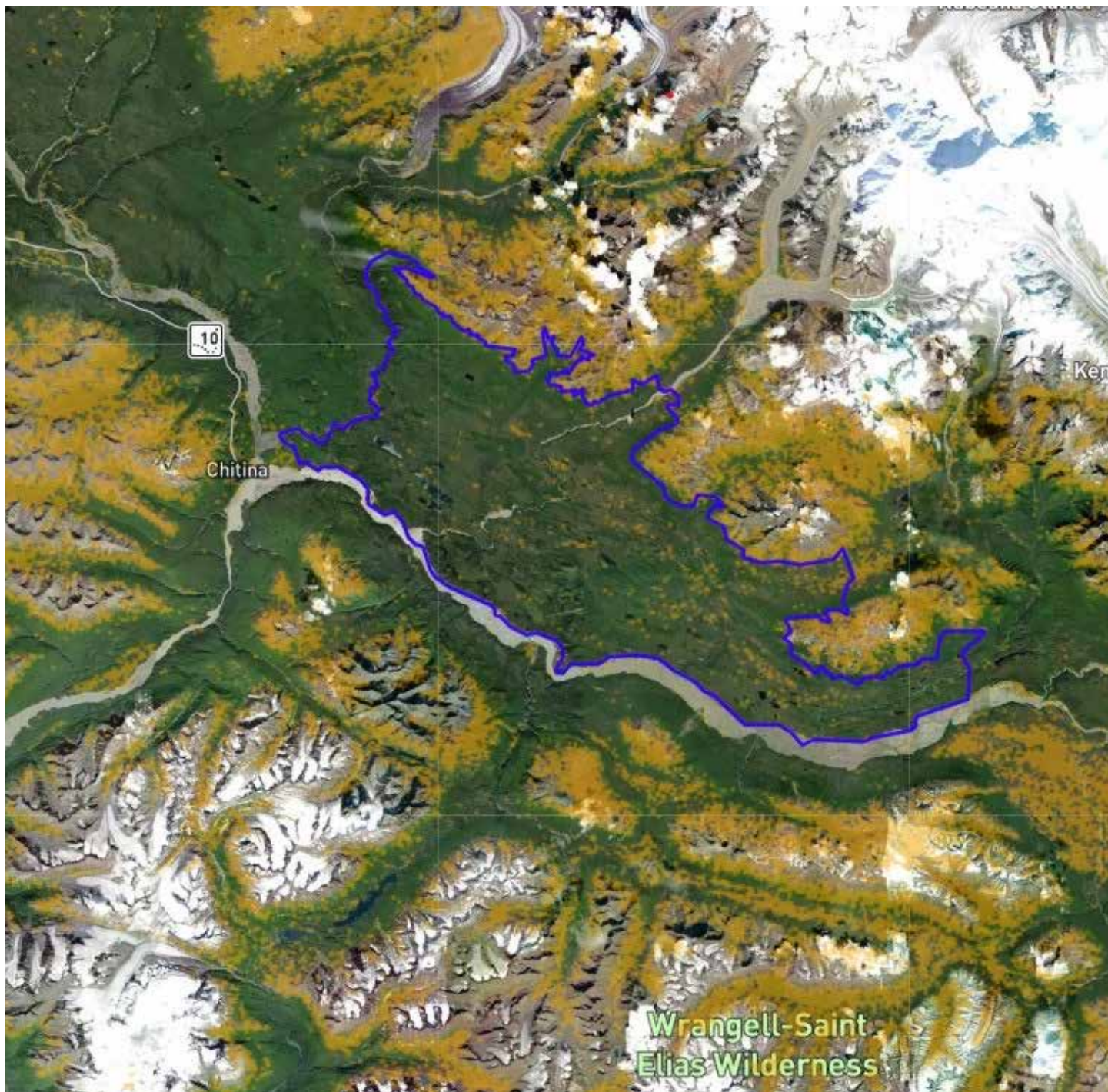
M A P S A P P E N D I X

STRELNA 12

FJØRDLAND FIRE SOLUTIONS



STRUCTURE DENSITY MAP
WITH SPRUCE IN RED



G R A S S E S I N G O L D

STRELNA 14

FJØRDLAND FIRE SOLUTIONS

Assessment of Fuels Risk/Hazard, Barriers, Fire Protection Resources, and Firewise

Community: **Strelna**

Rating Elements

- 1) Risk/Hazard Analysis of available fuels inside community (inside community to 1 mile)
- 2) Risk/Hazard Analysis of available fuels outside community (1-10 miles)
- 3) Barriers
- 4) Fire Protection Resource Availability
- 5) Community Firewise Rating
- 6) Overall Community Rating
- 7) Wildfire Risk to Communities (wildfirerisk.org) Rating Summary

Risk/Hazard Analysis, Available Fuels

The Copper River Basin is classified as Fire Regime Group IV, which means a stand replacement severity fire is possible every 35-100+ years.

- 1. Inside Community:** The rating area includes lands within one mile of the community in all directions. The rating is based on history/likelihood of fire in the community and the availability of hazard fuels.

RISK/HAZARD ANALYSIS AVAILABLE FUELS CHART 1

FUELS (predicted fire behavior based on historic summertime weather with hot, dry conditions)	Alaska Fire Return Interval: High 0-99 years	Where Found:
Black Spruce Boreal Forest <i>(CFFDRS=C2) rate of spread: high intensity: high spotting potential: high</i>	HIGH	Refer to Maps Appendix for all relevant fuel types
Black Spruce Lichen Woodland <i>(CFFDRS=C1) rate of spread: moderate intensity: moderate spotting potential: high</i>	HIGH	
Grass (cured tall standing or matted; CFFDRS = O1a/O1b) <i>rate of spread: high intensity: moderate: spotting potential: low</i>	HIGH	
Mixed Boreal Forest (may include white or black spruce, aspen and/or birch; CFFDRS=M1) <i>rate of spread: moderate intensity: moderate spotting potential: moderate</i>	MODERATE	
Hardwood Forest (includes aspen & birch; CFFDRS use D1 or M1, M2) <i>rate of spread: low intensity: low spotting potential: low</i>	MODERATE	

Deciduous Brush (includes willow & alder) <i>rate of spread: low intensity: low spotting potential: low</i>	LOW	
Insect and Disease in Mixed Boreal Forest (may include white or black spruce, aspen and/or birch) <i>rate of spread: moderate intensity: High spotting potential: High</i>	MODERATE	

Notes on fuels within one mile of community:

Due to the prevalence and various concentrations of spruce (Black Spruce all types, White Spruce, Spruce/Hardwood mix), Insect and Disease in Mixed Boreal Forest (beetle-kill), and Grass (seasonal cured tall standing or matted), Strelna is determined to be in the Risk/Hazard Analysis category of: HIGH

- 2. Outside Community:** The rating area is from 1-10 miles outside the community and is based on the history/likelihood of fire in the area and the availability of hazard fuels.

RISK/HAZARD ANALYSIS AVAILABLE FUELS CHART 2

FUELS (predicted fire behavior based on historic summertime weather with hot, dry conditions)	Alaska Fire Return Interval: High 0-99 years	Where Found:
Black Spruce Boreal Forest <i>(CFFDRS=C2) rate of spread: high intensity: high spotting potential: high</i>	HIGH	Refer to Maps Appendix for all relevant fuel types
Black Spruce Lichen Woodland <i>(CFFDRS=C1) rate of spread: moderate intensity: moderate spotting potential: high</i>	HIGH	
Grass (cured tall standing or matted; CFFDRS = O1a/O1b) <i>rate of spread: high intensity: moderate: spotting potential: low</i>	HIGH	
Mixed Boreal Forest (may include white or black spruce, aspen and/or birch; CFFDRS=M1) <i>rate of spread: moderate intensity: moderate spotting potential: moderate</i>	MODERATE	
Hardwood Forest (includes aspen & birch; CFFDRS use D1 or M1, M2) <i>rate of spread: low intensity: low spotting potential: low</i>	MODERATE	
Deciduous Brush (includes willow & alder) <i>rate of spread: low intensity: low spotting potential: low</i>	LOW	
Insect and Disease in Mixed Boreal Forest (may include white or black spruce, aspen and/or birch) <i>rate of spread: moderate intensity: High spotting potential: High</i>	MEDIUM	

Notes on fuels 1-10 miles from community:

Due to the prevalence of spruce (Black Spruce all types, White Spruce, Spruce/Hardwood mix), Insect and Disease in Mixed Boreal Forest (beetle-kill), and Grass (seasonal cured tall standing or matted), Strelna is determined to be in the Risk/Hazard Analysis category of: HIGH

3. Barriers

Standards for rating natural and constructed (human-made) barriers:

Low Fire Danger: The community has natural or constructed barriers that provide thorough protection from fuels less than 1 mile away in at least 3 cardinal directions. An example of this would be a small community sandwiched between a major river and a runway, or a community on an island

Moderate Fire Danger: The community has natural or constructed barriers that provide thorough protection from fuels less than 1 mile away in at least two cardinal directions. Communities may have multiple barriers affecting a rating. Examples are airstrips separating a community from significant outside fuels, communities set amidst less flammable vegetation types, or communities situated on major rivers.

High Fire Danger: Any barriers that exist which provide protection from fuels less than 1 mile away in fewer than two cardinal directions. Examples of insignificant barriers are small streams or sloughs with narrow riparian zones situated in highly flammable fuel types.

BARRIER RATING CHART

Barrier Type	Rating for Community (Low, Moderate or High Fire Danger)	Where Found:
Water Features	Major river	SE of CWPP Boundary
Other Natural Features	River	Splits CWPP Community
Constructed (Human-made) Features	None	
Overall Community Barrier Rating	HIGH	

Notes on natural and constructed (human-made) barriers:

Due to a lack of significant barriers within proximity, Strelna is determined to be in the Risk/Hazard Analysis category of: HIGH

4. Fire Protection Resource Availability

FIRE PROTECTION RESOURCES RESPONSE CHART

Response Time	Risk	Kind of Response <small>(List resources available for initial attack)</small>
Adequate initial attack resources are more than 75 minutes away and adequate extended attack resources are more than 12 hours away.	High	
Adequate initial attack resources are 30- 75 minutes away and adequate extended attack can be in place in 8-12 hours.	Moderate	
Adequate initial attack resources are less than 30 minutes away and adequate extended attack can be in place in less than 8 hours.	Low	
Overall Fire Response Rating	HIGH	

Notes on fire protection resources:

Due to response times for adequate initial attack resources and extended attack resources, Strelna is determined to be in the Risk/Hazard Analysis category of: HIGH

5. Community Firewise Rating

Alaska Firewise Standards for Creating Defensible Space

Landscaping: There is a clearing of flammable vegetation at least 30 feet around the home for firefighting equipment: coniferous brush and dead/overhanging branches are removed; trees are pruned 6-10 feet above the ground; lawn is mowed and watered regularly, and ladder fuels are

removed from the yard; remaining trees are spaced at least 30' apart at crowns; garden equipment (hoses and hand tools) are kept on the property.

Construction Guidelines: Home is made of fire-resistant or non-combustible construction materials (especially important for roofing); vents are covered with wire mesh no larger than 1/8 inch; at least two ground-level doors exist; at least two means of escape exist in each room. Water

Supply Guidelines: Home has a reliable water source, 3 to 4 sprinklers and enough hose to circle the home.

Access Guidelines: Access roads are at least 2 lanes wide and clearly marked; ample turnaround space exists for vehicles/fire equipment.

Clear of Flammables/Refuse/Debris Guidelines: Combustible materials are not located in the yard or under decks or porches; firewood is stored away (at least 30 feet) from the house; all debris or refuse is picked up regularly.

Suggested Strelna Community Escape Routes and Safety Zones:

(To be ultimately determined by Agency Personnel)

Safety Zones:

- 1) River flats area by Chitina Bridge
- 2) Gravel clearing south of Kuskulana Bridge

Escape Routes:

- 1) Mccarthy Road

COMMUNITY FIREWISE FOR DEFENSIBLE SPACE RATING CHART
(Overall community assessment, not individual structures)

Alaska Firewise Standards	Low Excellent Over 65% of homesites and community buildings meet standard	Moderate Between 35- 65% of homesites and community buildings meet standard	High Less than 35% of homesites and community buildings meet standard
Landscaping			X

Construction			X
Water Supply			X
Access Guidelines/ Combustibles			X
Overall Rating			HIGH

Notes on defensible space within this community:

Due to inadequate defensible space around more than 65% of structures/allotments, non-fire-hardened construction methods of more than 65% of structures, inadequate water supply to more than 65% of structures/allotments, and inadequate access to more than 65% of structures/allotments (including inadequate access due to various combustibles/HAZMAT), Strelna is determined to be in the Risk/Hazard Analysis category of: HIGH

6. Overall Community Rating

OVERALL RATING CHART SUMMARY

Category	Rating
Risk/Hazard Analysis of available fuels inside community (inside community to 1 mile)	HIGH
Risk/Hazard Analysis of available fuels outside community (1-10 miles)	HIGH
Barriers	HIGH
Fire Protection Resource Availability	HIGH

Community Firewise Rating	HIGH
---------------------------	-------------

Notes on other contributing factors to risk and mitigation of wildland fire in this community:
Also of note in the Strelna Community is the predominance of continuous black spruce, as well as challenging access/egress.

7. Wildfire Risk to Communities (wildfirerisk.org) Rating Summary:

Strelna, through the Overall Rating Chart Summary, has received an overall rating of: HIGH

Appendix D

Bureau of Land Management Glennallen Field Office Risk Assessments

Wildland Fire Community Risk Assessment

Planning Area: McCarthy	
Overall Rating	
Category	Rating
Fuels Risk/Hazard inside community	High
Fuels Risk/Hazard outside community	High
Barriers	High
Fire Protection	High
Community Firewise Rating	High
NFRC Database-Wildfire Likelihood	Moderate 70th Percentile
Final Rating:	High

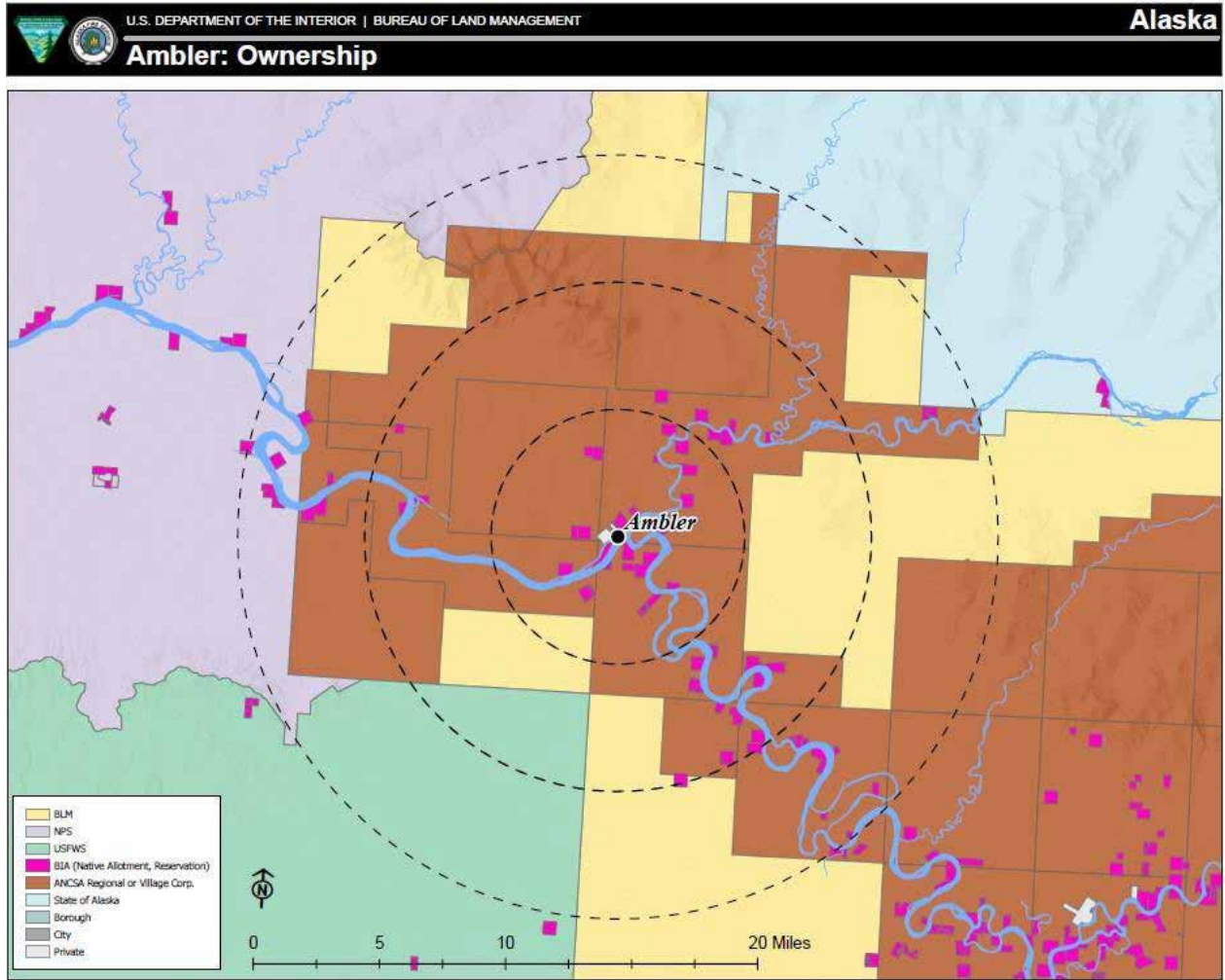
Background/History

Current Population: ~75 (Population Year: 2021)

The community of Strelna originated as a mining community and a rail station for the CR&N Railroad. Strelna is located on Strelna creek, 1.5 miles north of its junction with the Kuskulana river along the McCarthy road from mile marker 3-18. The community is also within the boundaries of Wrangell St. Elias National Park and Preserve, roughly 76 miles southeast of Glennallen. Subsistence plays a vital role in the lives of Strelna residents, most depend heavily on subsistence harvests of fish, game, berries, and local gardening and agriculture. The area sees an influx of visitors in the summer months mostly in the form of tourists traveling to McCarthy and to visit Wrangell St. Elias National Park and Preserve. Land ownership is primarily National Park service with some Native Corp. and private land in the western part of the community. There is no local government and very few commercial amenities.

Overview / Values

Location/Ownership Map:



Community Areas of Concern:

Many of the structures in the community have had some clearing completed and are generally in good shape with adequate defensible space around them. Most of the residences in the community are located on or adjacent to Silver, Sculpin, and Strelna Lakes, along with Strelna creek and the Chokosna River. This also provides some protection from wildland fire due to natural barriers. Structures that are not in these areas generally have very little defensible space and are much more likely to be impacted by a fire and have poor or no access for fire suppression resources. There are also areas of beetle killed spruce that will add to the difficulty of controlling fire spread. The increased traffic in the summer months due to park visitation also increases the threat of human cause roadside fires. Structure and vegetation fires within the community

have the potential to spread into the wildland, and fires in the wildland have a high potential to enter parts of the community due to the continuity of the fuels in and around the community.

Community Overview / Values Map:



Fuels Assessment

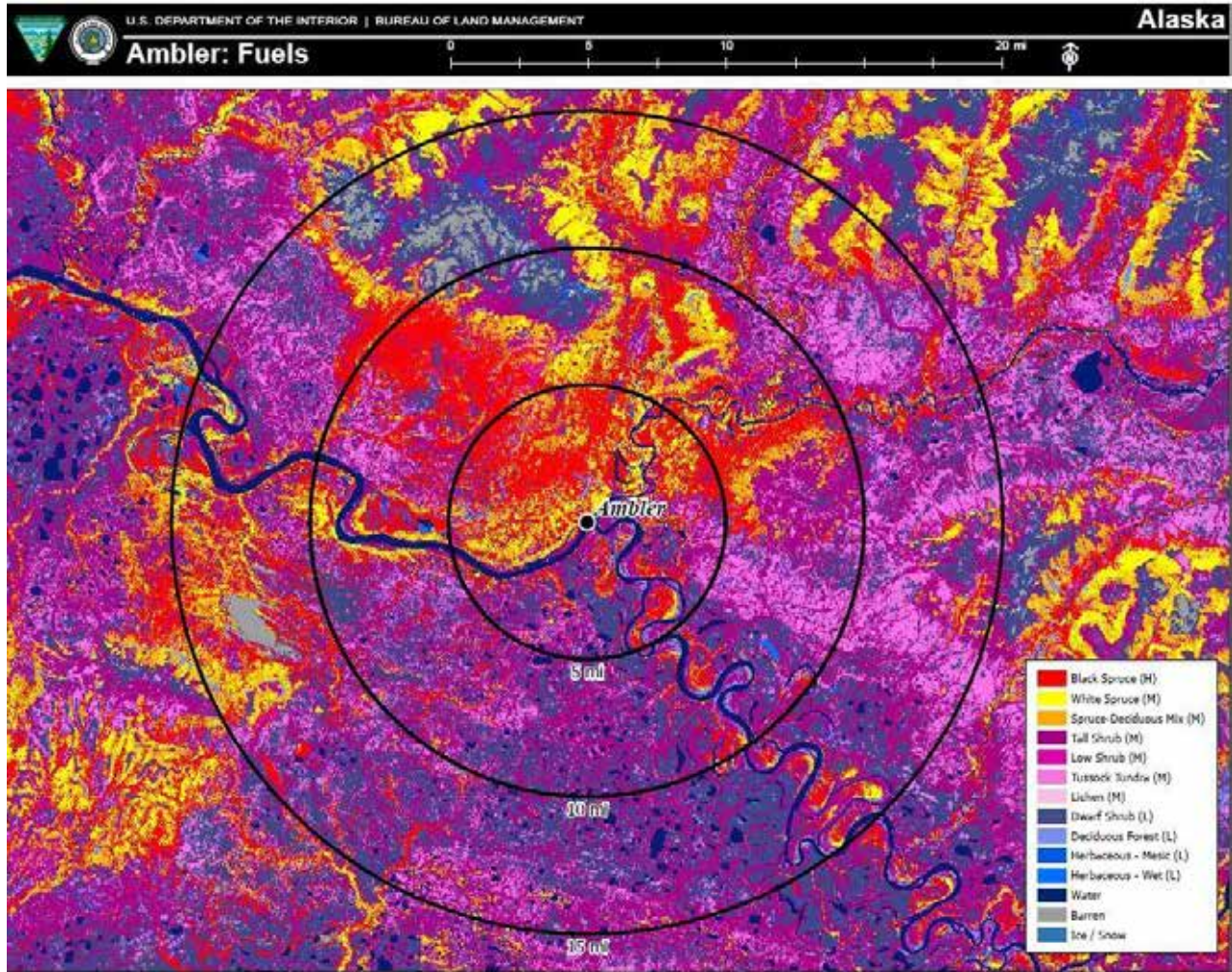
Risk/Hazard Analysis (Inside and with-in 1 mile of the community)

FUEL Types (predicted fire behavior based on historic summertime weather with hot, dry conditions)	Wildland Fire Hazard	Percent of Area
Black Spruce Boreal Forest (CFFDRS=C2) rate of spread: high / intensity: high / spotting potential: high	High	25%
Black Spruce Lichen Woodland (CFFDRS=C1) rate of spread: moderate / intensity: moderate / spotting potential: high	High	25%
Grass (cured tall standing or matted; CFFDRS = O1a/O1b) rate of spread: high / intensity: moderate / spotting potential: low	Moderate	15%
Mixed Boreal Forest (may include white or black spruce, aspen and/or birch; CFFDRS=M1) rate of spread: moderate / intensity: moderate / spotting potential: moderate	Moderate	10%
Insect and Disease in Mixed Boreal Forest (may include white or black spruce, aspen and/or birch. CFFDRS=M4 30%) rate of spread: moderate / intensity: high / spotting potential: moderate	Moderate	10%
Hardwood Forest (includes aspen & birch; CFFDRS use D1 or M1, M2) rate of spread: low / intensity: low / spotting potential: low	Low	5%
Deciduous Brush (includes willow & alder) rate of spread: low / intensity: low / spotting potential: low	Low	10%

Risk / Hazard Analysis (1 -10 miles outside community that can impact community)

FUEL Types (predicted fire behavior based on historic summertime weather with hot, dry conditions)	Wildland Fire Hazard	Percent of Area
Black Spruce Boreal Forest (CFFDRS=C2) rate of spread: high / intensity: high / spotting potential: high	High	25%
Black Spruce Lichen Woodland (CFFDRS=C1) rate of spread: moderate / intensity: moderate / spotting potential: high	High	25%
Grass (cured tall standing or matted; CFFDRS = O1a/O1b) rate of spread: high / intensity: moderate / spotting potential: low	Moderate	15%
Mixed Boreal Forest (may include white or black spruce, aspen and/or birch; CFFDRS=M1) rate of spread: moderate / intensity: moderate / spotting potential: moderate	Moderate	10%
Insect and Disease in Mixed Boreal Forest (may include white or black spruce, aspen and/or birch. rate of spread: moderate / intensity: high / spotting potential: moderate CFFDRS=M4 30%)	Moderate	10%
Hardwood Forest (includes aspen & birch; CFFDRS use D1 or M1, M2) rate of spread: low / intensity: low / spotting potential: low	Low	5%
Deciduous Brush (includes willow & alder) rate of spread: low / intensity: low / spotting potential: low	Low	10%

Fuels Map:



Barrier(s) Assessment

Natural: The Community is located on the northeast side of the Chitna River, south east of the Kotsina River and north and west of the Kuskulana River. Other various riparian features are consistent throughout the area including small-medium lakes, creeks, and rivers. Hardwood stands and hardwood brush can slow fire spread under certain conditions. With wind, dry fuel sources, and the spotting distances associated with this fuel type many of these natural barriers are ineffective.

Constructed: The McCarthy road runs through the center of the area and this is the only road access in or out of the area. Some Gravel Roads, trails, and other human made openings are present throughout the area, some of these openings could be affective in slowing fire growth.

Barrier Rating Chart

Barrier Type (list specific type under excellent, fair or poor)	*Rating
Water (may include lakes, rivers, streams and sloughs)	Moderate
Natural features (may include barren landscape, rock, topographic features)	High
Human-made features (may include airstrips or other clearings)	Moderate
Overall Rating	Moderate

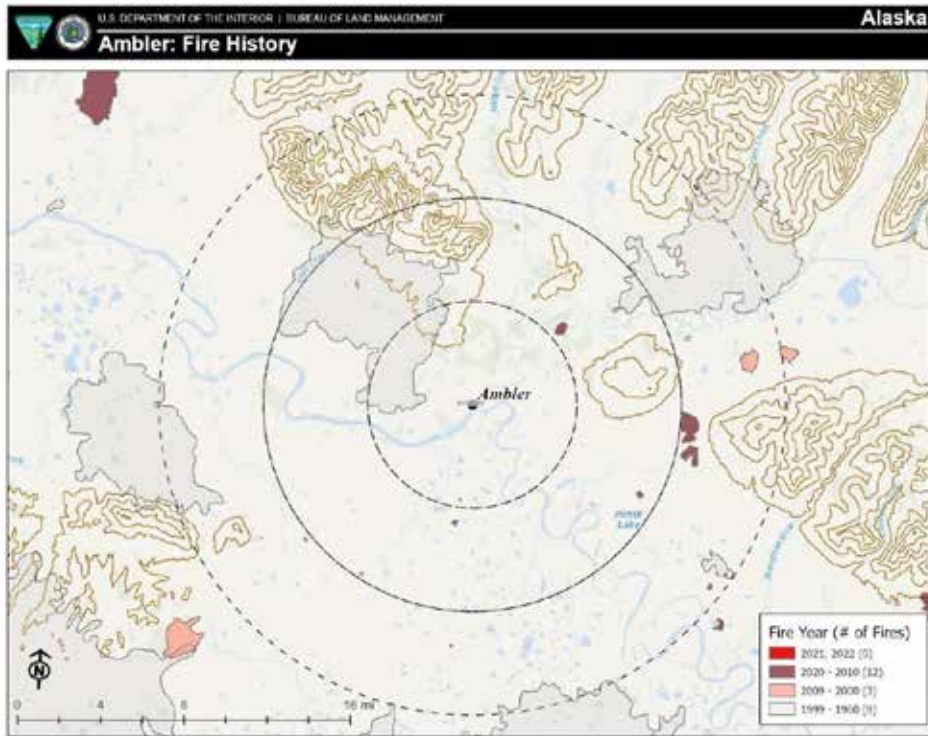
Barrier Rating Chart Key:

Low Fire Danger: The community has a barrier(s) that provides thorough protection from fuels less than one mile away in at least three cardinal directions. An example of this would be a small community sandwiched between a major river and a runway or a community on an island.

Moderate Fire Danger: The community has a barrier(s) that provides thorough protection from fuels less than one mile away in at least two cardinal directions. Communities may have multiple barriers affecting a rating. Examples are airstrips separating a community from significant outside fuels, communities set amidst certain vegetation types, or some communities situated on major rivers or lakes.

High Fire Danger: Any barriers that exist provide protection from fuels less than one mile away in fewer than two cardinal directions. Examples of insignificant barriers are small streams or sloughs with narrow riparian zones situated amid highly flammable fuel types.

Fire History Map:



Depending on the severity/consumption of the burn, fuels remaining, time of year, and current conditions, fires may or may not carry through old burn scars. In general, burn scars older than 15 years will not significantly hinder the ability for a fire to carry through the burn scar (unless the severity of the burn was high, the tundra mat was consumed, and aspen saplings or willow/alder regrew). Resistance to control will be lessened, and the probability of a running/spotting head fire will be dramatically reduced.

Firewise Assessment

Community Firewise Rating for Defensible Space Assessment
(Overall Community Assessment Not Individual Structures)

Alaska Firewise Standards	Low Over 65% of homesites and community buildings meet standard	Moderate 35-65% of homesites and community buildings meet standard	High 35% or less of homesites and community buildings meet standard
Landscaping			High
Construction			High
Water Supply			High
Access		Moderate	
Clear of Flammables/ Refuse/Debris (flammables stored properly & area cleared)			High
Overall Rating			High

Alaska Firewise Rating Chart Key:

Landscaping: Clearing of flammable vegetation at least 30 feet around the home for firefighting equipment; coniferous brush and dead/overhanging branches are removed; trees are pruned 6-10 feet above the ground; lawn is mowed and watered regularly, and ladder fuels are removed from the yard; remaining trees are spaced at least 30 feet apart at crowns; garden equipment (hoses and hand tools) are kept on the property.

Construction Guidelines: Home is made of fire-resistant or non-combustible construction materials (especially important for roofing); vents are covered with wire mesh no larger than 1/8 inch; at least two ground-level doors exist; at least two means of escape exist in each room.

Water Supply Guidelines: Home has a reliable water source, 3 to 4 sprinklers and enough hose to circle the home.

Access Guidelines: Access roads are at least two lanes wide and clearly marked; ample turnaround space exists for vehicles/fire equipment.

Clear of Flammables/Refuse/Debris Guidelines: Combustible materials are not located in the yard or under decks or porches; firewood is stored away (at least 30 feet) from the house; all debris or refuse is picked up regularly.

Fire Protection Resources

The community rates High based on limited wildland fire capabilities, including trained personnel and equipment available. Wildland fire response is the responsibility of the state of Alaska Department of Forestry and Fire and local volunteer departments, based out of Tazlina and Strelna, neighboring communities also have some volunteer resources available. The local VFD in Strelna has only 2 trucks, and about 20 of the local residents are on the department. Response time vary from 15-60 minutes. Local resources are primarily Type 6 fire engines and water tenders. DOF response from Tazlina is 60-90 minutes. Fire retardant is available from Palmer with a response time of about 60-90 minutes, and from Fairbanks with a response time of about 90-120 minutes. During the primary fire season May-July there could also be a helicopter capable of bucket drops available from Tazlina or Tok depending on fire danger and availability. Smokejumpers are also available from Fairbanks with a response time of about 90 minutes. There could also be Crews available from Palmer and Fairbanks with a minimum response time of 6-12 hours and up to 48 hours depending on availability and other fire activity across the state.

Fire Protection Resources Response Chart

Response Time	Kind of Resource (initial and extended attack)	Risk	Overall Risk
Initial attack resources are more than 75 minutes away and adequate extended attack resources are more than 12 hours away.	Hand Crews, Engines, Incident Command Teams, and Air resources.	High	High
Adequate initial attack resources are 30-75 minutes away and adequate extended attack can be in place in 8-12 hours.	Smoke Jumpers, Air Tankers, Air Attack.	Moderate	
Adequate initial attack resources are less than 30 minutes away and adequate extended attack can be in place in less than 8 hours.	Local Volunteer Fire Department Engine, personnel, Water Tender and Dozers.	Low	

Strelna

COMMUNITY WILDFIRE PROTECTION PLAN

